

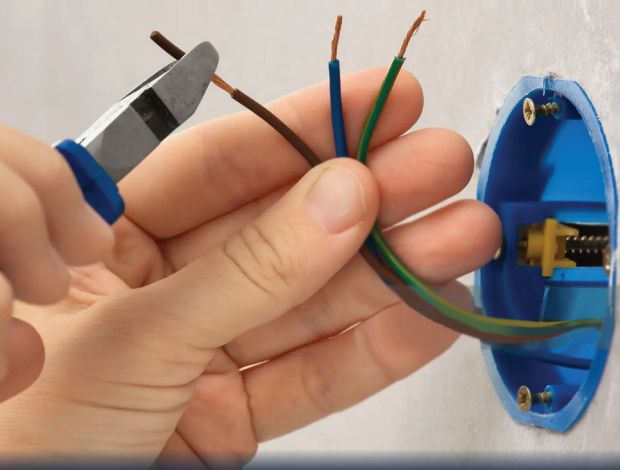
**THERE'S A SPARK
IN OUR STEP.**



**AND SPARKY
IN OUR NAME.**



STILL ON THE GO. ON YOUR BEHALF.



Since 2000 – year one of the new millennium – we've been working hard on your behalf. For your home, business, and rental properties. And we never get tired of it.

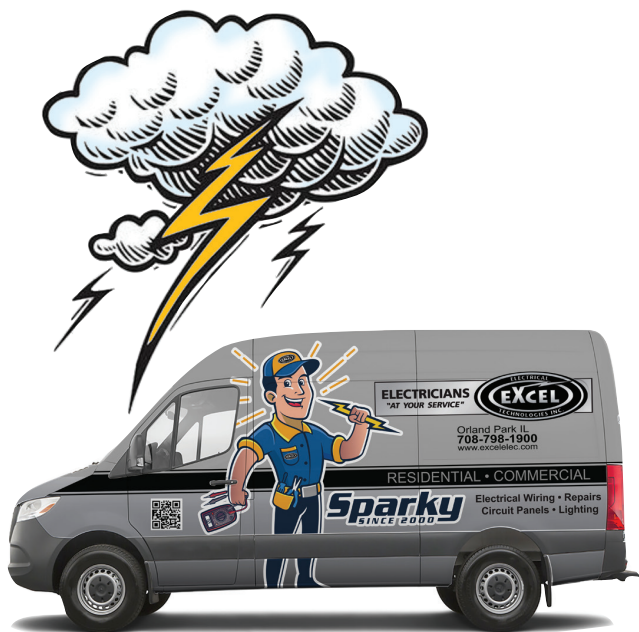
That's the kind of commitment that comes from **loving what we do**, and who we do it for. The kind it takes to:

- Constantly improve on your behalf
- Develop new and better ways to serve you
- Deliver superior quality at a guaranteed, pre-approved price
- Make it easy and pleasant to do business with us

That's who we are. And we're just warming up.



SOMETHING ESTABLISHED. SOMETHING NEW.



Does anything about Excel Electrical Technologies look or “sound” different to you? Well, it should, because in 2023, **we officially adopted a new company mascot – Sparky.**

The whole idea was to infuse our brand with the same kind of energy we bring to providing for your residential and commercial electrical service needs. And to have some fun in the process.

Today, you’ll see Sparky on our website, trucks, building, and on everything else that bears our name. And now, **you can see us in person** just by giving us a call.

RESIDENTIAL SERVICES

Excel Electrical Technologies is your complete electrical services provider, offering these and other residential services in a timely fashion:

- Electrical service upgrade, such as switching from fuses to circuit breakers
- Wiring, switch, and outlet repairs and installation
- Electrical wiring and safety inspections
- Interior & exterior lighting design and installation
- Pool & spa wiring

That's far from a complete list, mind you. Call or visit our website and see for yourself. There, in fact, you'll see dedicated pages on such specialty services as **video doorbell and EV charger installation**. All on your behalf, and all while adhering to the highest standards of excellence.



COMMERCIAL & PROPERTY MANAGEMENT SERVICES

If yours is a **small to medium-sized business or organization**, you have plenty of reasons to make Excel Electrical Technologies your go-to team of licensed electricians. These include:

- 100-800 amp circuit breaker panels
- 3-phase wiring 208 and 240-Volt
- Interior & exterior lighting
- Cat 5e and 6 ethernet cable runs
- Underground wiring

Sparky is a great choice for rental property owners, too. Our **property management services** include preventive maintenance, electrical wiring and repairs. ensuring regulatory compliance – we can even develop a **custom ongoing service plan** that covers all bases. And always to your complete satisfaction.

SPARKY IS READY WHEN YOU ARE

Whatever your electrical service needs might be, we're ready to roll up our sleeves and get to work on your behalf. Before we start, you'll receive a **guaranteed price quote**. We also **guarantee your 100% satisfaction**. And that's just two more reasons to make Excel Electrical Technologies – the home of Sparky – your electrical service provider of choice.



708 798-1900 | services@excelelec.com

WAYS WE CAN HELP YOU NOW

1. Do you test smoke detectors at least 2x per year and check expiration dates in the process? Smoke and carbon monoxide detectors expire after no more than 10 years. Yes No
2. Have your electrical outlets been tested for proper polarity and grounding? Yes No
3. Do you have GFCI outlets installed on kitchen countertops, in bathrooms and garages, near laundry sinks, and outdoors, all as required by code? Yes No
4. Has your circuit panel and electrical meter been inspected for arcing, loose connections or signs of overheating? Yes No
5. Do all interior and exterior lighting fixtures function properly and without flickering? Yes No
6. Are there areas of your home, indoors or out, that could benefit from additional lighting, decorative or otherwise? Yes No
7. Is your home equipped with sufficient electrical outlets to minimize the use of extension cords? Yes No
8. Do all light switches function properly and without a sizzle or crackle sound? Yes No

If you answered "no" to any of these questions, Sparky can help!



708 798-1900 | services@excelelec.com